

# California Department of Resources Recycling and Recovery (CalRecycle) & Fresno County

*3rd Annual Statewide Conference on Illegal Dumping*

## **CalRecycle Relationships – Local Government & Stakeholders**

April 21, 2023



Stephanie Becker, CalRecycle Analyst

Steve Santa Croce, CalRecycle Senior Waste Management Engineer

Sal Espino, Fresno County Principal Administrative Analyst

# Presentation Overview

- CalRecycle's role in illegal dumping
- Types of relationships
- Stakeholder/recipient examples  
**Fresno County, Oakland**



# CalRecycle Role & Background



[2022 Illegal Dumping Conference Presentation](#)

complete overview CalRecycle, programs & grants.

Collaborates with *local government* and *stakeholders* primarily through **programs** and **grants** that assist with illegal disposal sites.

...can only assist *directly* with illegal disposal sites but has some funding and resources to help address litter and illegal dumping.

*Stop by booth for more information.*



Illegal Disposal Site



Illegal Dumping



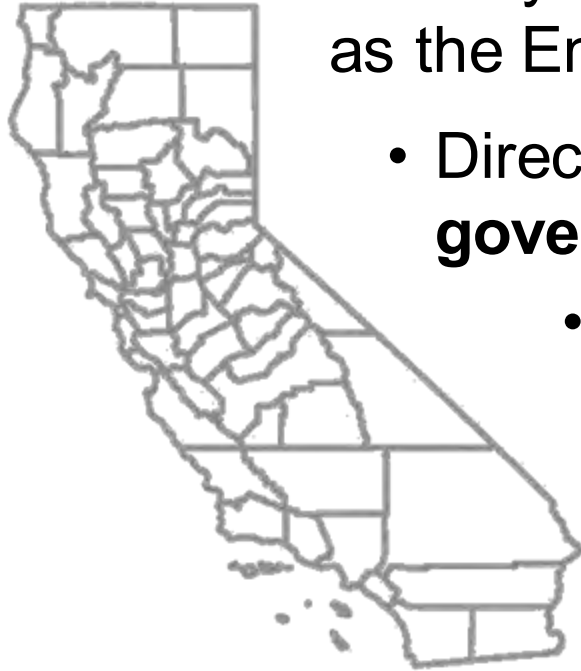
Litter



# CalRecycle Relationships

LEAs are responsible for investigating illegal disposal sites.

- Partially funds Local Enforcement Agencies (**LEAs**), serves as the Enforcement Agency (**EA**) in some regions.
- Direct support (like engineering and scientific services) to **local governments** and LEAs.
  - Cleanup grant & loans recipients **cities, counties, Joint Powers Authorities (JPAs), special districts, resource conservation districts, tribes** (and sometimes **private entities**).
  - **State/private contractors** – on retainer for cleanup projects.



Illegal Dumping Technical Advisory Committee (IDTAC) is CalRecycle's 'illegal dumping' arm—advises them, state & local/regional entities. CalRecycle a member.



# Appreciation & Reminders



CalRecycle appreciates its various partners – collaboration and determination.




Funding available w/ limitations.  
*Cost recovery, prevention measures, local contribution and community engagement.*

# CalRecycle Managed Remediation

Our Solid Waste Disposal and Codisposal Site Cleanup Program includes a CalRecycle Managed Remediation program

*...to assist entities like cities, counties, and public agencies with illegal disposal site cleanup projects they cannot solely manage.*

**Illegal Disposal Site Cleanup Assistance** 

CalRecycle's Solid Waste Disposal and Codisposal Site Cleanup Program includes a CalRecycle Managed Remediation program to assist entities like cities, counties, and public agencies with illegal disposal site cleanup projects they cannot solely manage.

**Available Assistance**

CalRecycle can:

- Investigate and assist with the cleanup of publicly and privately owned property where the landowner is unwilling or unable to clean up the property in a timely manner.
- help entities by arranging to have a contractor remove and properly dispose of the solid waste when it is determined to be significant and there is a need for quick action to avoid more pollution, public health issues, nuisance, or threats to the environment.
- provide measures to help reduce dumping, including signs, fencing, or other barriers.
- help with field and laboratory testing of waste and soil.

**Ineligible**  
Waterway cleanup and removal of waste and vessels in waterways.


**Cost Recovery**

CalRecycle is obligated to seek recovery of the funds used to clean up properties (Public Resources Code Section 48023). Local agencies can address cost recovery, either through their own mechanisms or by assisting CalRecycle in pursuing cost recovery.

Local agencies requesting cleanup assistance for public property may request a cost recovery waiver if those responsible cannot be identified. Projects typically exempt from cost recovery include lands that benefit the public, like public parks, public lands, and other sites owned by public entities for the benefit of and use by the public.

**Helpful Documentation**

- A copy of the grant deed with a legal description of the property
- Description and photos of the types and estimated quantities of waste on site
- Geographic site information such as topography, proximity to populated areas, environmentally sensitive areas, and other site-related information
- Copies of investigation reports, regulatory inspections, and enforcement orders
- Landowner information, including identity and location, ability, and willingness to help remove waste, and history of responses to requests and enforcement from local agencies
- CalRecycle Solid Waste Information System information about the site





# Garfield Ave. Riverdale, CA







## Project Site - Before



Interactive Image Map:

<https://sitescan.arcgis.com/share/d8a22d9b-24a5-4c3a-843a-0199039e1c68>





## Project Site - Before





# Collaboration



DEPARTMENT of  
BEHAVIORAL  
HEALTH



Department of Public Health  
[www.fcdph.org](http://www.fcdph.org)

WE ARE  
DSS  
DEPARTMENT of  
SOCIAL SERVICES





Project Site - During





Project Site - Current





Project Site – current, secured

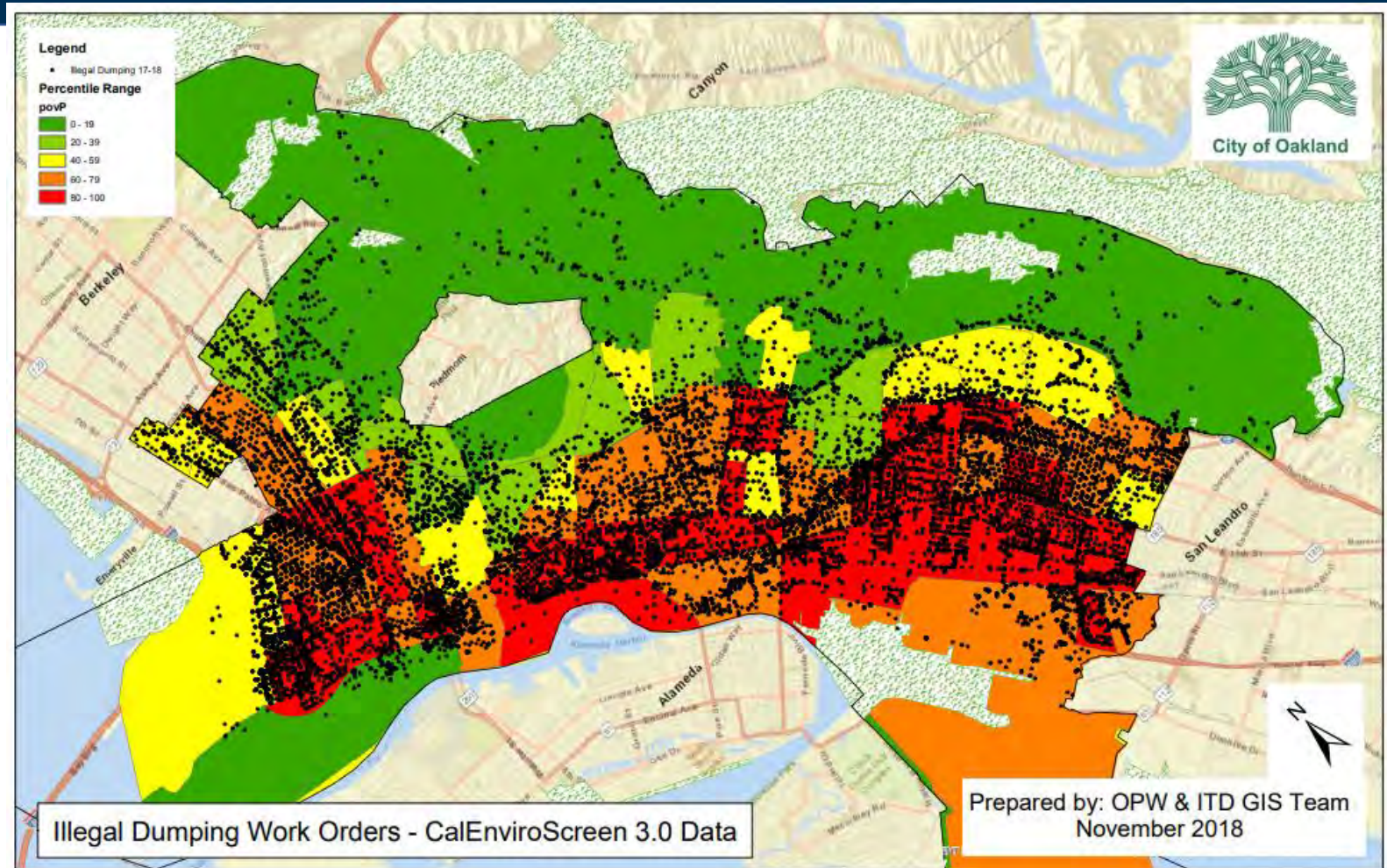


# Community Impact



# City of Oakland – Illegal Disposal/Dumping Grant

- Awarded 2019
- Completed 2021
- Grantee - City Public Works



# Take Aways

- ➔ Designate a lead agency for illegal dumping programs/projects.
- ➔ Areas with constant illegal dumping, that are not quickly addressed can grow/attract more dumping, & potentially become illegal disposal sites.
- ➔ Build relationships now—Partnerships are key. Be better positioned for situations if you already work with local entities & groups.
- ➔ Reach out in advance for assistance, grants, etc. Often takes time.





# Q & A, Contact Info



## **Steve Santa Croce**

Senior Waste Management Engineer  
Solid Waste and Tire Cleanup Program  
Sacramento, CA 95812

O: (916) 341-6688, C: (916) 879-045  
[steve.santacroce@calrecycle.ca.gov](mailto:steve.santacroce@calrecycle.ca.gov)



## **Stephanie L. Becker**

Analyst & IDTAC Facilitator

O: 916.341.6484, [Stephanie.Becker@calrecycle.ca.gov](mailto:Stephanie.Becker@calrecycle.ca.gov)



## **Salvador Espino | Principal Administrative Analyst** **County Administrative Office**

2281 Tulare St., Suite 304, Fresno, CA 93721

Main Office: (559) 600-1710 Direct: (559) 600-1228

[sespino@fresnocountyca.gov](mailto:sespino@fresnocountyca.gov)