

2ND ANNUAL STATEWIDE CONFERENCE ON ILLEGAL DUMPING

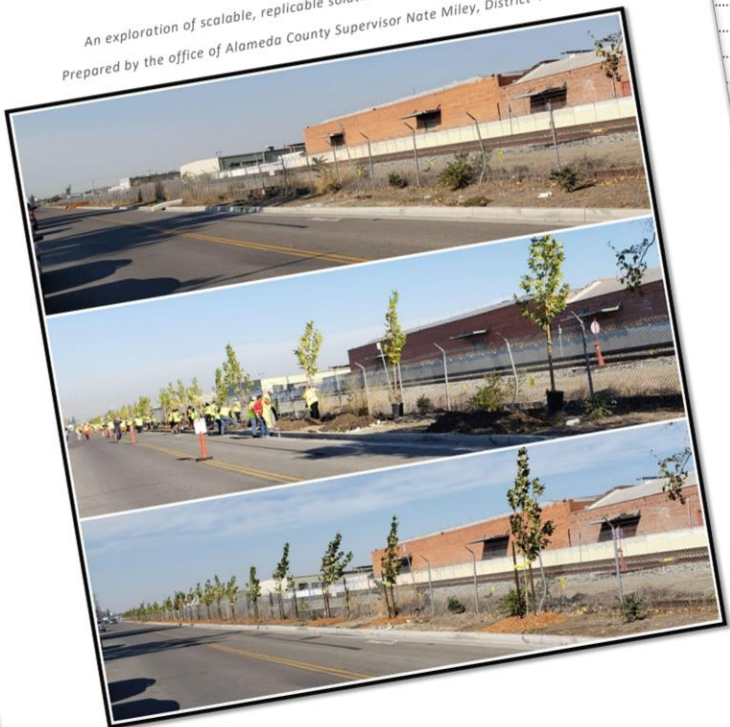
The Three E's

A BEST PRACTICE STRATEGY FOR ADDRESSING ILLEGAL DUMPING



Alameda County Illegal Dumping Pilot FINAL REPORT

An exploration of scalable, replicable solutions to illegal dumping.
Prepared by the office of Alameda County Supervisor Nate Miley, District 4



of 28

Alameda County Illegal Dumping (ACID) Pilot

BEGINNING IN 2018, THE ACID PILOT SOUGHT TO IDENTIFY SCALABLE STRATEGIES FOR ADDRESSING ILLEGAL DUMPING THAT COULD BE REPLICATED.

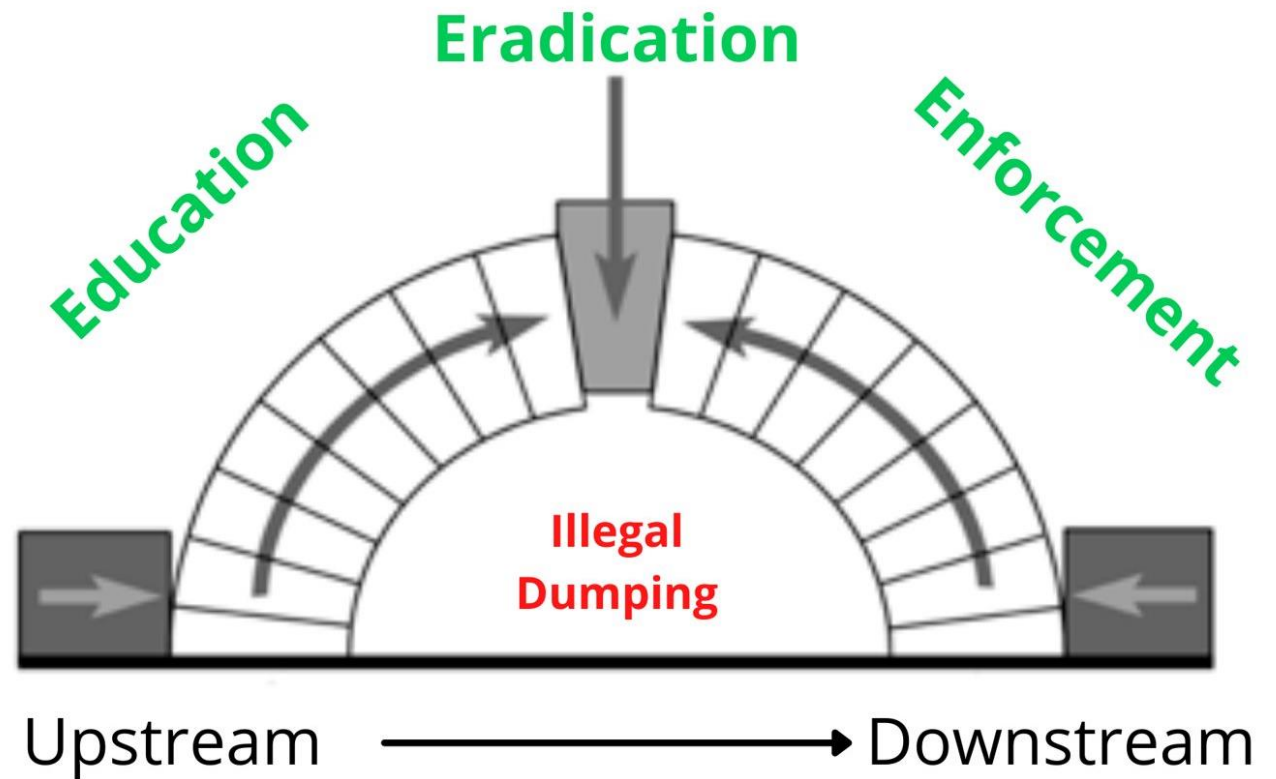
IN 2021 THE EFFORT WAS PROMOTED TO A PROJECT AND CONTINUES TO ADDRESS ILLEGAL DUMPING IN EAST OAKLAND.

ACID Pilot's Main Strategy

PILOT UTILIZED A STRATEGY OF EDUCATION, ERADICATION, AND ENFORCEMENT, COMMONLY KNOWN AS “THE THREE E’S”, TO PROVIDE UPSTREAM AND DOWNSTREAM INTERVENTIONS AIMED AT ADDRESSING ILLEGAL DUMPING.

The Three E's Strategy

A comprehensive approach to overcoming illegal dumping.



A photograph of a community event. A man in a yellow t-shirt is speaking at a wooden podium with a microphone. He is holding a piece of paper. A crowd of diverse people is gathered around him, some looking at their phones. In the background, there is a blue tent with the text "Alameda County Sheriff" and a star logo. The scene is outdoors with trees and houses in the distance.

Education:

AN UPSTREAM APPROACH TO PREVENT ILLEGAL DUMPING.



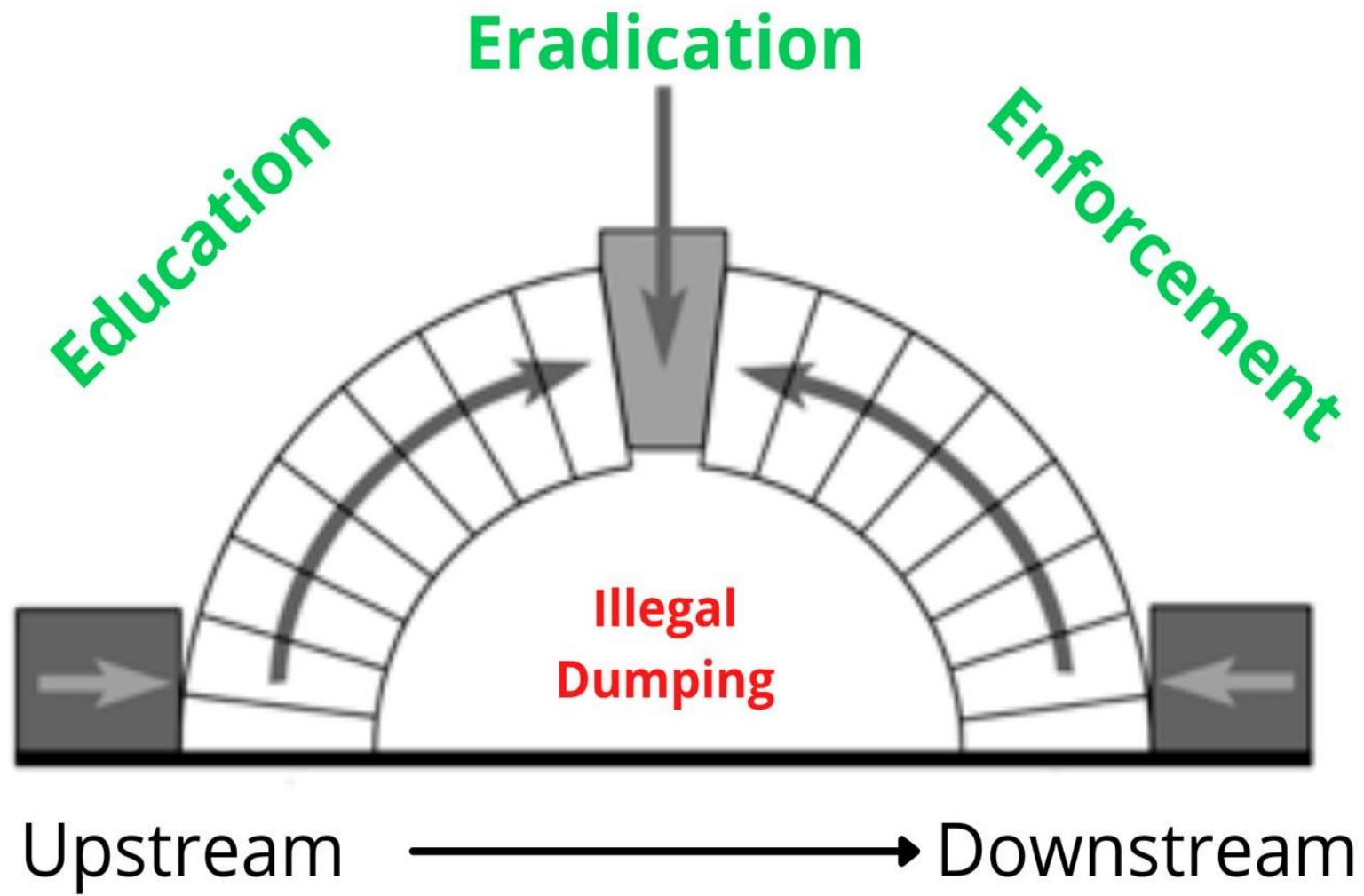
Eradication:

REMOVING ILLEGAL DUMPING QUICKLY, SO IT DOESN'T ATTRACT MORE DUMPING, LITTER, AND BLIGHT.

A photograph of a community meeting. A man with dark curly hair, wearing a light blue patterned short-sleeved shirt, is seen from the back, facing three police officers seated at a long table. The officers are wearing tan uniforms with patches. The man is gesturing with his hands while speaking. The background consists of wood-paneled walls. The image has a semi-transparent dark overlay with white text.

Enforcement:

A DOWNSTREAM APPROACH AND COMMITMENT TO HOLDING
ILLEGAL DUMPERS ACCOUNTABLE FOR THEIR ACTIONS.



	Education	Eradication	Enforcement
Proactive	<ul style="list-style-type: none"> • Youth Curriculum. • Community Outreach. • Civic Engagement. 	<ul style="list-style-type: none"> • Education Efforts (Proactive & Reactive). • Beautification Efforts (Trees, Murals, Etc.). • Micro-Cleaning. • Regular Cleanup Checks. 	<ul style="list-style-type: none"> • Publicize Enforcement Efforts in Advance. • Publicize Enforcement Results and Convictions. • Sting Operations. • Regular Patrol Checks.
Reactive	<ul style="list-style-type: none"> • Targeted Outreach: Right-Size Waste Bins. • Engage residents and businesses near illegal dumping hotspots. 	<ul style="list-style-type: none"> • Removing Illegal Dumping. • Abate Graffiti. • Tow Abandoned Cars. • Warning Letters (4.4). • Community Intervention. 	<ul style="list-style-type: none"> • Investigate All Illegal Dumping Leads. • Prioritize Leads and respond appropriately. • Charge Cases!

Interventions can be applied proactively and reactively.



The Results:

6 COMMUNITIES ENGAGED.

2+ MILES OF STREET ADOPTED.

BROAD COALITION FORMED.

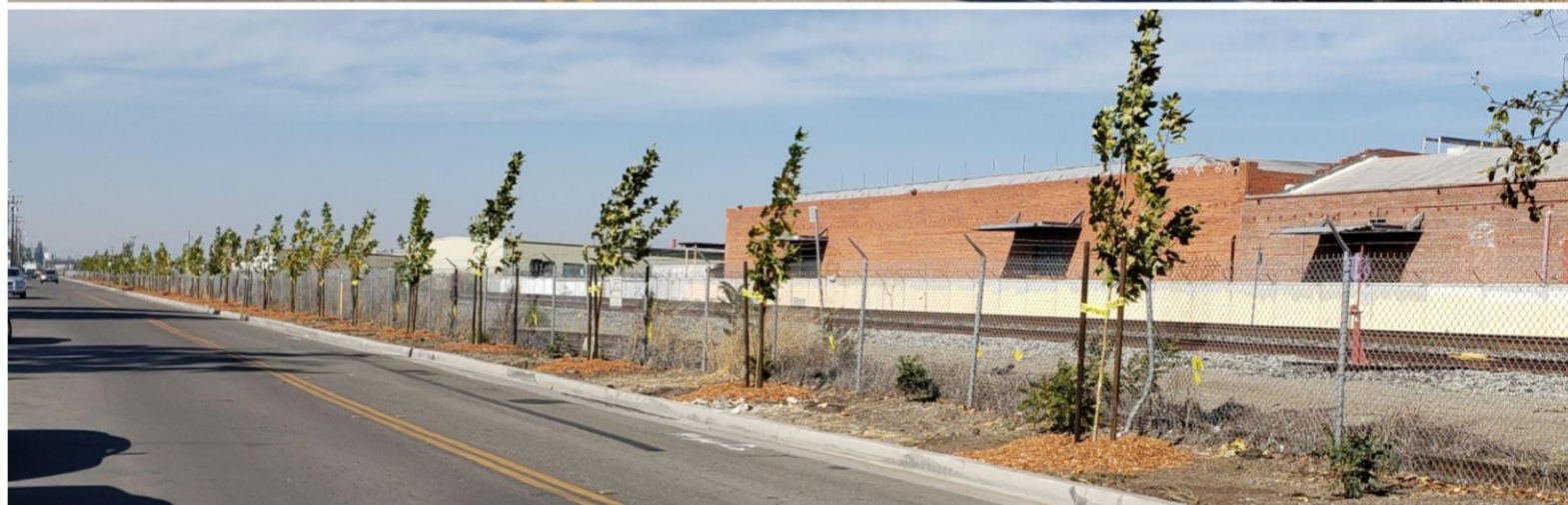
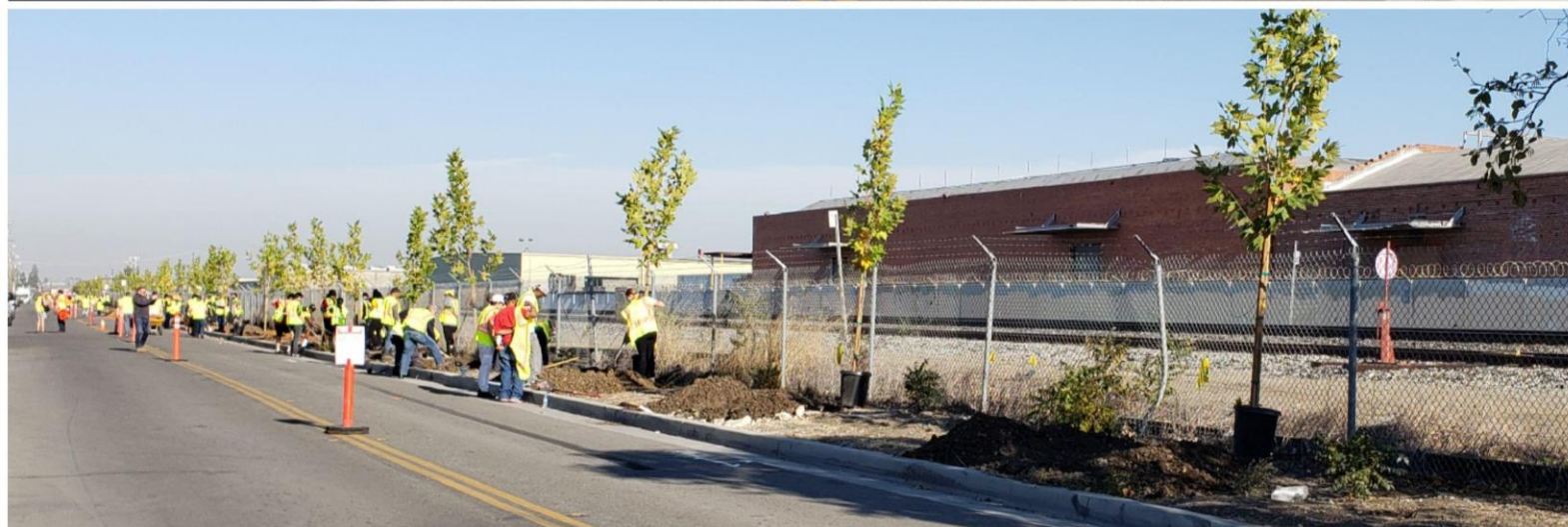




The Results:

DOZENS OF CLEANUP EVENTS.

400+ TONS OF ILLEGAL DUMPING.



The Results:

150+ TREES PLANTED.

HUNDREDS OF VOLUNTEERS.



The Results:

150+ ABANDONED VEHICLES.

CAMERA-BASED ENFORCEMENT.

100+ CITATIONS ISSUED.

The Results: 6 Effective Strategies

1. Enforce existing laws.

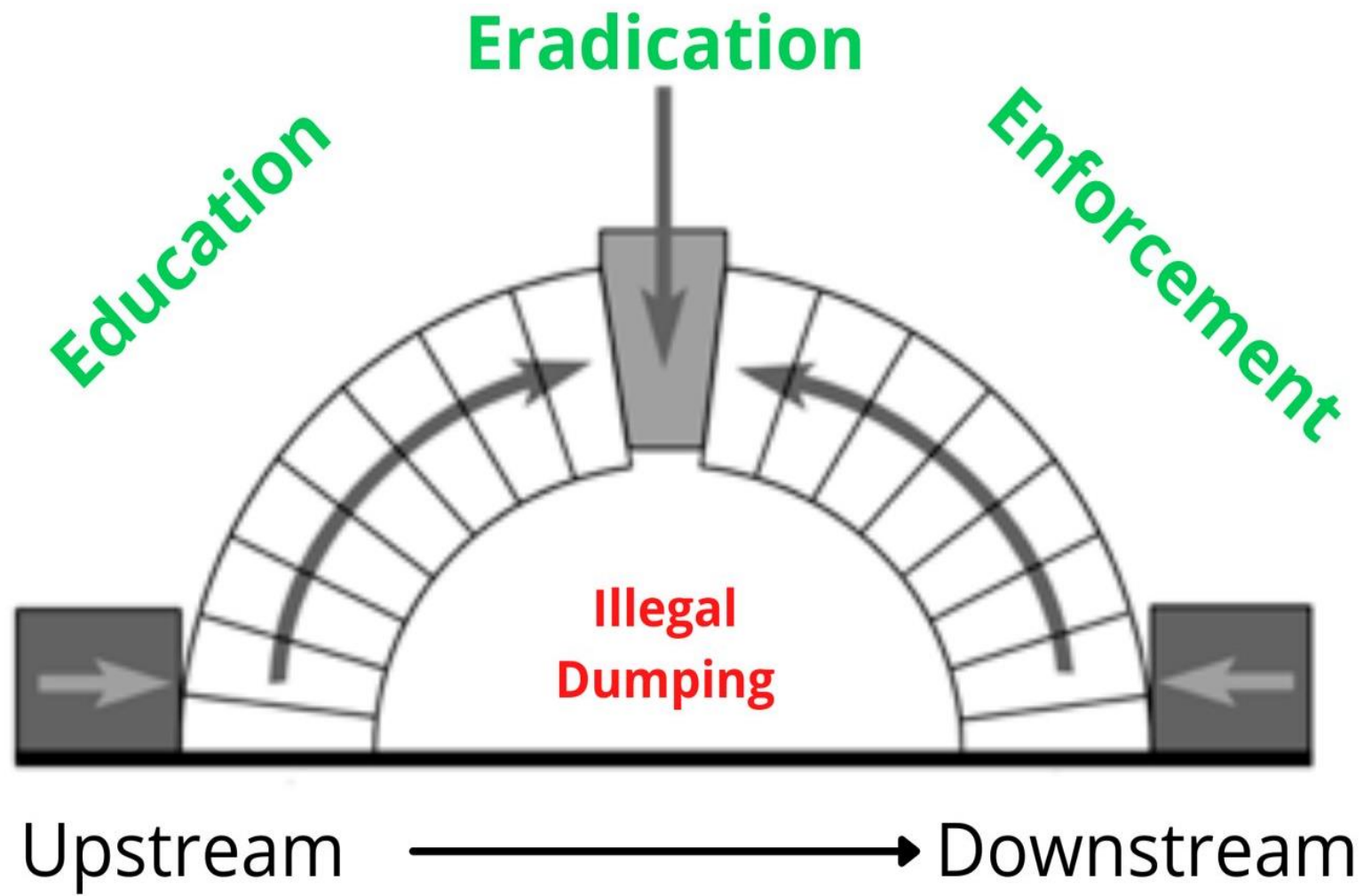
2. Utilize camera-based Enforcement Strategies.

3. Reduce barriers to eradication.

4. Embrace cross-sector partnerships.

5. Sustaining the strategy is key.

6. Crime prevention through environmental design.



2ND ANNUAL STATEWIDE CONFERENCE ON ILLEGAL DUMPING

The Three E's

A BEST PRACTICE STRATEGY FOR ADDRESSING ILLEGAL DUMPING

